



RECP #: 752670

RECORDED 5/8/2019 AT 1:11 PM BK# 2620 PG# 1712
Debra K. Lee, CLERK OF LARAMIE COUNTY, WY PAGE 1 OF 1

STATE OF WYOMING CORNER RECORD

(In compliance with the CORNER PERPETUATION AND FILING ACT, Wyoming Statutes, 1997 Section 33-29-140, et. seq., and the Rules and Regulations of the Board of Registrations for Professional Engineers and Professional Land Surveyors)

NORTHEAST CORNER SECTION 15, T. 18 N., R. 61 W., 6TH P.M., LARAMIE COUNTY, WYOMING

GLO: A FLINT 22X10X6 SET 15" DEEP MARKED WITH 4 NOTCHES ON THE SOUTH EDGE AND 2 NOTCHES ON THE EAST SIDE FOR CORNER TO SEC. 10,11,14,15.

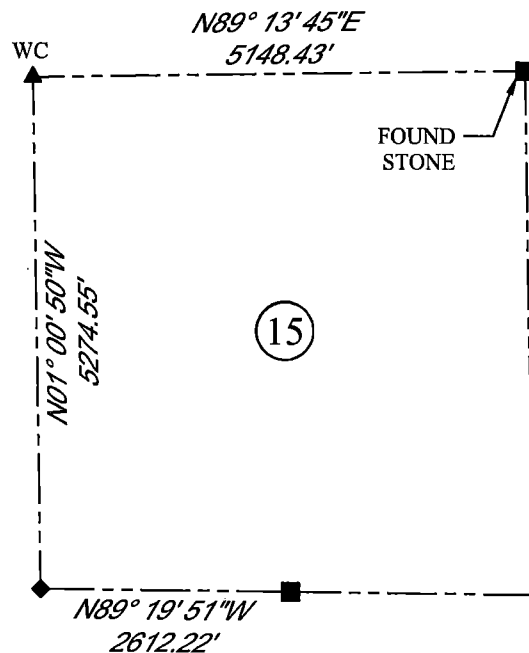
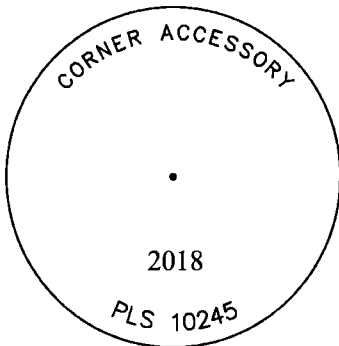
FOUND: FIRM SET STONE. NO MARKINGS.

SET: ACCESSORY CAP AS SHOWN ON S. SIDE OF STONE. CAP IS APPROXIMATELY 5 1/2" ABOVE GROUND.



SCALE: NONE
NORTH DETERMINED BY
G.P.S OBSERVATIONS

SET ACCESSORY CAP, STAMPED AS SHOWN



LEGEND:

- FOUND BLM CAP
- FOUND USFS CAP
- FOUND STONE
- ◻ FOUND PRIVATE MONUMENT
- ◆ CALCULATED POSITION
- ▲ SET MONUMENT (LS10245)
- SECTION LINE

DATE OF FIELD WORK: 10/05/2018 OFFICE REFERENCE: MERIDEN

CROSS INDEX DIAGRAM

	1	2	3	4	5	6	7	8	9	10	11	12	13	14	15	16	17	18	19	20	21	22	23	24	25
A																									
B																									
C		6																							
D			5																						
E				4																					
F					3																				
G						2																			
H							1																		
I																									
J																									
K																									
L																									
M																									
N																									
O																									
P																									
Q																									
R																									
S																									
T																									
U																									
V																									
W																									
X																									
Y																									
Z																									
	1	2	3	4	5	6	7	8	9	10	11	12	13	14	15	16	17	18	19	20	21	22	23	24	25

WOOD
2615 AVIATION DRIVE
SHERIDAN, WY 82801
PH: 307-675-6400



THIS CORNER RECORD WAS
PREPARED BY ME OR UNDER
MY DIRECTION AND
SUPERVISION,
SEAL AND SIGNATURE

